

Kreinik Silk Mori® and Silk Serica® come in 155 dyed-to-match colors. Kreinik Silk Bella™ comes in 45 colors.

Silk Mori® Milkpaint™ Threads

Stitching Hints

Milkpaint threads are ideal for historical samplers, or to create an antiqued effect in any design.

1 We recommend that you **prepare the ground material** prior to stitching to protect the thread from “catching” on the rough edges of the fabric:

- For fabric, turn the edges under and secure with a running stitch using cotton thread.
- For canvas, cover the raw edges with masking tape or single fold bias tape.

2 To **keep your stitching looking its best**, take time to wash your hands before starting to stitch and use a non-greasy hand cream to soften cuticles and moisturize dry skin.

3 To maintain the beautiful sheen of silk threads while you are stitching:

- **Work with only a 12” to 18” length** of silk to keep the thread from tangling and fraying from repeated passes through the ground material.
- **Use a “poke and stab”** rather than a “hand sewing” method of working your stitches, which also keeps a thread from fraying.

• **Use a needle whose eye easily accommodates the threads**, but which does not distort the ground fabric/canvas. This opens the fabric so the thread can glide through easily, reducing thread abrasion as it passes through the material.

4 **Let your needle dangle** every few stitches to let the thread relax and thus avoid knotting and tangling.

5 A **laying tool** such as a bodkin or trolley needle may help you lay strands parallel during stitching to obtain the greatest degree of uniform light reflection. You can also use your needle to lay strands neatly and evenly.

6 **Maintain the twist of Silk Serica** as you stitch by applying a slight reverse twist to your needle, or allowing your needle to dangle every one or two stitches and return to its natural twist. This will keep the silk from untwisting or becoming too tightly twisted during the stitching process.

7 Silk threads should be dry cleaned. **We do not recommend that you wash silk work.**

If you have any questions about using silk threads call us at 1-800-537-2166 or email us at kreinik@kreinik.com. We would love to hear from you!

† 1031 Baby Pink	1116 Dark Christmas Red	3015 Medium Dark Coral	† 4076 Dark Dusty Green	5014 Medium Navy	6074 Medium Mauve Mist	† 7082 Lightest Straw	8055 Medium Ash Grey
1032 Lightest Pink	† 1117 Very Dark Christmas Red	† 3017 Very Dark Coral	† 4077 Very Dark Dusty Green	† 5016 Dark Navy	6076 Dark Mauve Mist	7084 Medium Straw	† 8073 Light Charcoal
1033 Light Pink	† 1119 Garnet	† 3021 Sherbet	4093 Light Icy	5022 Lightest Denim	6083 Light Grape	† 7086 Dark Straw	† 8075 Medium Dark Charcoal
1043 Light Cobalt Violet	1203 Light Victorian Rose	3042 Lightest Dresden Rose	4094 Medium Icy	† 5053 Light Slate Blue	6086 Dark Grape	† 7087 Very Dark Straw	8077 Very Dark Charcoal
1046 Dark Cobalt Violet	1204 Medium Victorian Rose	3044 Medium Dresden Rose	4096 Dark Icy	† 5055 Medium Dark Slate Blue	6104 Medium Lavender	† 7124 Cream	8084 Medium Gray
1047 Very Dark Cobalt Violet	1205 Dark Victorian Rose	3045 Med.Dark Dresden Rose	† 4162 Lightest Victorian Green	† 5057 Very Dark Slate Blue	6106 Dark Lavender	7126 Ecru	8086 Dark Gray
1054 Medium Fuchsia	† 2013 Light Gold	3062 Lightest Henna	4163 Light Victorian Green	5071 Baby Blue	6107 Very Dark Lavender	7128 Beige	9032 Lightest Neutral Flesh
1055 Medium Dark Fuchsia	† 2014 Medium Gold	3063 Light Henna	† 4164 Medium Victorian Green	5073 Light Country Blue	6112 Lightest Wisteria	† 7133 Light Bark	9034 Medium Neutral Flesh
1057 Very Dark Fuchsia	2015 Medium Dark Gold	3065 Dark Henna	4166 Dark Victorian Green	5091 Ice Blue	6114 Medium Wisteria	7134 Medium Bark	
† 1092 Lightest Wood Violet	† 2016 Dark Gold	4033 Light Kelly Green	† 4167 Very Dark Victorian Green	5093 Light Royal Blue	6116 Dark Wisteria	7135 Medium Dark Mocha	† Colors also available in Silk Bella
1093 Light Wood Violet	2017 Very Dark Gold	4034 Medium Kelly Green	4193 Light Jade	5095 Medium Dk. Royal Blue	† 6123 Light Dusty Lavender	† 7136 Dark Mocha	
1094 Medium Wood Violet	2024 Medium Buttercup	4036 Dark Kelly Green	4196 Dark Jade	5097 Very Dark Royal Blue	† 6124 Medium Dusty Lavender	7166 Dark Brown Black	
† 1096 Dark Wood Violet	2026 Dark Buttercup	4037 Very Dark Kelly Green	† 4203 Light Sage	5102 Lightest Cerulean	6126 Dark Dusty Lavender	7172 Lightest Honey	
† 1098 Wood Rose	2027 Very Dark Buttercup	4043 Light Teal	† 4204 Medium Sage	5103 Light Cerulean	† 6127 Very Dark Dusty Lavender	7173 Light Honey	
1103 Light Mauve	† 2032 Lightest Lemon	4044 Medium Teal	† 4206 Dark Sage	5104 Medium Cerulean	6204 Medium Dusty Plum	7174 Medium Honey	
1104 Medium Mauve	† 2033 Light Lemon	4046 Dark Teal	4212 Light Avocado	5105 Medium Dark Cerulean	6205 Dark Dusty Plum	7175 Medium Dark Honey	
1105 Medium Dark Mauve	2063 Light Pumpkin	† 4063 Medium Holly	4214 Medium Avocado	5107 Very Dark Cerulean	6207 Very Dark Dusty Plum	7183 Light Sable	
1107 Very Dark Mauve	2066 Dark Pumpkin	4066 Dark Holly	4215 Medium Dark Avocado	† 5202 Lightest Periwinkle	7012 Lightest Lead Grey	7184 Medium Sable	
1112 Flame	2067 Very Dark Pumpkin	† 4067 Holly	4216 Dark Avocado	† 5203 Light Periwinkle	7014 Medium Lead Grey	† 8000 Soft White	
1113 Light Christmas Red	3011 Very Pale Coral	† 4073 Light Dusty Green	5012 Lightest Navy	5204 Medium Periwinkle	7024 Antique Parchment	† 8050 Black	
1114 Medium Christmas Red	† 3013 Light Coral	4074 Medium Dusty Green	† 5013 Light Navy	6073 Light Mauve Mist	7025 Parchment	8053 Light Ash Grey	Actual colors may vary slightly from picture

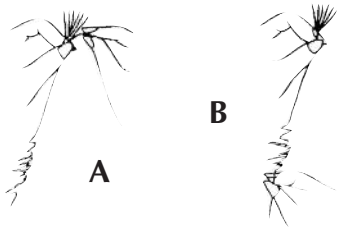
0103 Light Antique Mauve	0422 Very Light Thyme Green	0544 Medium Sampler Blue	0715 Dark Pecan
0104 Medium Antique Mauve	0423 Light Thyme Green	0553 Medium Colonial Blue	0723 Light Wheat
0106 Very Dark Antique Mauve	0424 Medium Thyme Green	0555 Pure Colonial Blue	0724 Medium Wheat
0113 Light Lenten Rose	0433 Light Moss Green	0602 Light Faded Rose	0725 Dark Wheat
0114 Medium Lenten Rose	0434 Medium Moss Green	0604 Medium Faded Rose	0731 Cornmeal
0115 Dark Lenten Rose	0443 Light Nantucket Green	0605 Dark Faded Rose	0732 Lightest Cornmeal
0116 Very Dark Lenten Rose	0444 Medium Nantucket Green	0614 Medium Pennyroyal	0733 Light Cornmeal
0303 Light Coralbells	0512 Very Light Tidewater Blue	0624 Medium Thistle	0734 Medium Cornmeal
0304 Medium Coralbells	0513 Light Tidewater Blue	0625 Dark Thistle	0743 Light Oyster-shell
0305 Dark Coralbells	0515 Dark Tidewater Blue	0632 Light Dusk	0804 Medium Cobblestone
0323 Light Cameo	0523 Light Portsmouth Blue	0633 Medium Dusk	0813 Medium Flint
0324 Medium Cameo	0524 Medium Portsmouth Blue	0634 Dark Dusk	0815 Dark Flint
0325 Dark Cameo	0525 Dark Portsmouth Blue	0643 Light Lavender Water	0824 Medium Pewter
0403 Light Celadon	0532 Light Chesapeake Bay Blue	0644 Medium Lavender Water	0902 Very Light Cinnamon
0413 Light Hemlock	0533 Medium Chesapeake Bay Blue	0704 Medium Buttermilk	0903 Light Cinnamon
0414 Medium Hemlock	0534 Dark Chesapeake Bay Blue	0712 Very Light Pecan	0904 Medium Cinnamon
0415 Dark Hemlock	0536 Very Dark Chesapeake Bay Blue	0713 Light Pecan	0923 Light Curry
0416 Very Dark Hemlock	0543 Light Sampler Blue	0714 Medium Pecan	0924 Medium Curry

Kreinik Silk Mori® is a premium 6-strand, 100% pure SPUN SILK with a delightful softness and creamy lustre. Available in skeins, it can be plied and used for a variety of stitches. Silk Mori® is easy to use and ideal for beginners in silk thread embroidery.

Use Mori for:
 SAMPLERS
 COUNTED THREAD
 NEEDLEPOINT
 SILK GAUZE
 BLACKWORK
 SURFACE WORK
 CRAZY QUILTING

Open a skein of Silk Mori by removing the wrapper and loosening the slip knot holding the thread ends together. Separate the 6 strands before using and recombine the appropriate number of plies before threading the needle. To prevent any tangling:

1. Cut a length of Silk Mori about 15 inches.
2. Hold the end and pull out 1 strand. (Illus. A)
3. Straighten the thread after each strand has been pulled out. (Illus. B)
4. Lay all strands parallel to each other and thread your needle (for added lustre, keep strands parallel while stitching).
5. REMEMBER: Silk Threads have no grain or nap.



The outline below gives suggested usage for using Mori in tent or cross stitches. Decorative stitches may require extra strands for adequate coverage.

NEEDLEPOINT AND CANVAS WORK:

- 2 strands for 22-ct canvas • 6 strands for 14-ct canvas
- 3 strands for 18-ct canvas • 1 strand for 40-ct gauze

CROSS STITCH:

- 1 strand for 16- and 18-ct fabrics • 2 strands for 14-ct
- 1 strand for stitching over two on 32-ct • 2 strands for 28-ct



Kreinik Silk Serica® is a 3-ply, 100% pure FILAMENT SILK with a magnificent, rich sheen. It is a versatile silk thread that can be used *singly* as a fine twisted silk, or it can be separated for use as a highly reflective flat silk for more advanced stitching techniques.

Use Serica for:
 NEEDLEPOINT
 SAMPLERS
 CRAZY QUILTING
 CROCHET
 HARDANGER
 SURFACE WORK
 AND JAPANESE
 EMBROIDERY

When using Kreinik Silk Serica® as a single strand, simply cut the appropriate length from the reel, thread your needle, and begin to stitch. It allows perfect coverage on 18-count canvas in tent or half cross stitch, and works beautifully as Kloster Blocks in Hardanger or as satin stitches in samplers. Use a non-greasy hand cream to keep the filament silk from snagging on dry skin.

For more advanced stitching techniques, a single strand of Silk Serica® may be separated into 3 plies. Take hold of the strand with both hands near the end and apply a slight counter twist to separate the 3 plies.

After separating the Silk Serica® into 3 plies you will notice the soft ripples produced by the natural twist of the silk. This rippling effect is reminiscent of antique samplers. When the silk is dampened, the ripples relax, leaving a flat area of very high sheen. Use a cosmetic sponge to dampen your silk because it is not as abrasive as other sponges.



PLAY WITH TEXTURES:
This photo shows the different weights and textures of the Kreinik silks, including the two ways of using Silk Serica.

Visit our web site at www.kreinik.com to buy your silk threads and to download free projects using these silk threads.

Kreinik Silk Bella™ is a 3-ply very finely twisted FILAMENT SILK with a bright sheen. It is thinner than Silk Serica, and used straight off the reel (do not separate it into plies).

Use Bella for:
 HARDANGER
 PULLED WORK
 40-CT SILK GAUZE
 CRAZY QUILTING
 STITCHING OVER ONE
 COUNTED THREAD
 SAMPLERS
 BLACKWORK
 SURFACE WORK

This thin size of silk is perfect for woven bars in Hardanger, or for pulled work in samplers and canvas designs. Its beautiful lustre comes through when used in diminutive work like stitching on 40-count silk gauze or stitching over one on very fine counts of linen. Use it as a detailing thread, such as tendrils on a vine, spokes of a spider web, or fill-in areas of a blackwork design, for example.



WORKING TOGETHER:
Create Kloster Blocks with Silk Serica, woven bars with a matching color of Silk Bella and accent stitches such as leaves with Silk Mori.

A Stitcher's Guide To Silk Threads

Want to learn more about using Kreinik Silk Threads? This digest-sized book features:

- needlework history
- stitching tips
- stitch library
- silk thread design to stitch
- stitch glossary



Silk Mori® and Silk Serica® are registered trademarks of Kreinik Mfg. Co., Inc.

Kreinik
Silk Serica®
Silk Mori® and
Silk Bella™

COLOR CHART AND USAGE GUIDE



Kreinik Mfg. Co., Inc.
 PO Box 1966, Parkersburg, WV 26102 USA
www.kreinik.com • info@kreinik.com

